

# Flagstaff: Place Matters

How Place-making and Multimodal Planning  
contribute to a Healthy Community

Sara Dechter, Flagstaff Comprehensive Planning Manager  
Martin Ince, FMPO and City Multi-modal Planner



# Active lifestyles and Public Health

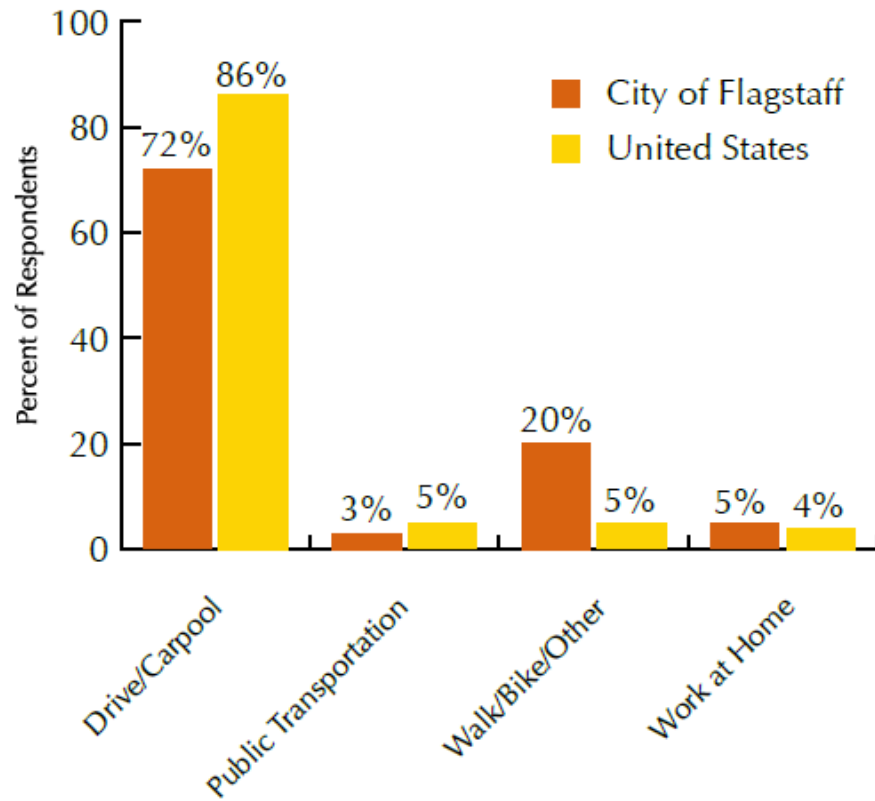
Flagstaff's Regional Plan promotes active lifestyles for residents and visitors through:

- transportation facilities and services;
- land-use planning and development;
- schools;
- recreation, parks and trails;
- safety, security and crime prevention;
- protecting our environment; and
- considering needs of all residents regardless of race, ethnicity, age or ability.

- 34.9% National rate of Obesity
- 25% for Coconino County  
up from 20% in 2008
- 30% is the Healthy People 2020 Goal

*Criteria above are from the National Center for Walking and Bicycling*

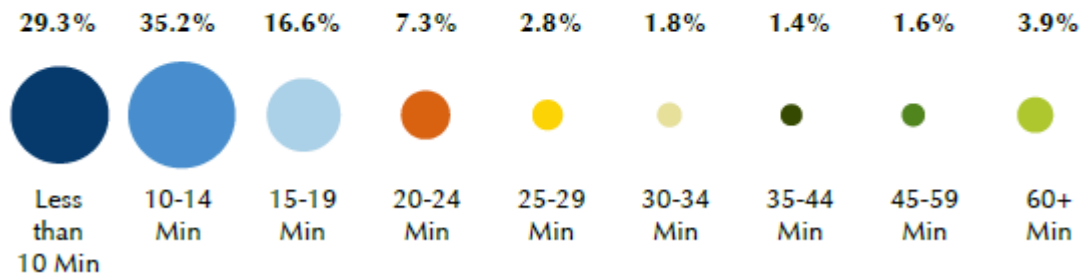
## How We Get to Work



# Travel in Flagstaff



## Journey to Work Trip Length in City of Flagstaff



# FLAGSTAFF URBAN TRAILS SYSTEM (FUTS)

***Most used and top-rated Transportation and Recreation Facility in town***

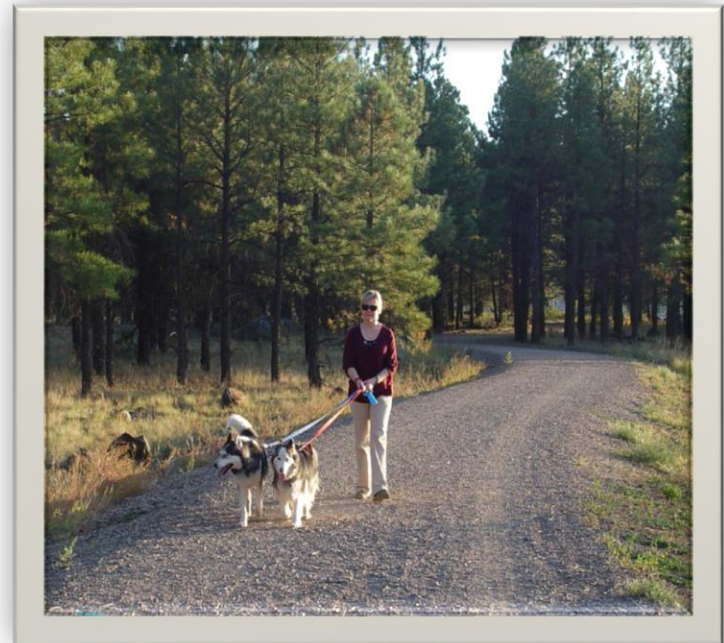
50 miles of FUTS trails in Flagstaff

Planned system of 130 miles

## Why do people use the FUTS?

Recreation	79.6%
Health/exercise	78.2%
Experience nature	56.0%
Commuting	50.9%

Source: FUTS Trail Users Survey 2011



# Flagstaff Transit Ridership

## Mountain Line – 12 Years and Growing Strong





# The Last Mile

- Safe and Efficient Multimodal Transportation System
- Convenient transfer between one modes
- Comprehensive, consistent, and highly connected system of bikeways and FUTS trails
- Design streets with continuous pedestrian infrastructure
- Goal of having a Complete Streets Policy



**Trips of less than 2.5 mile**

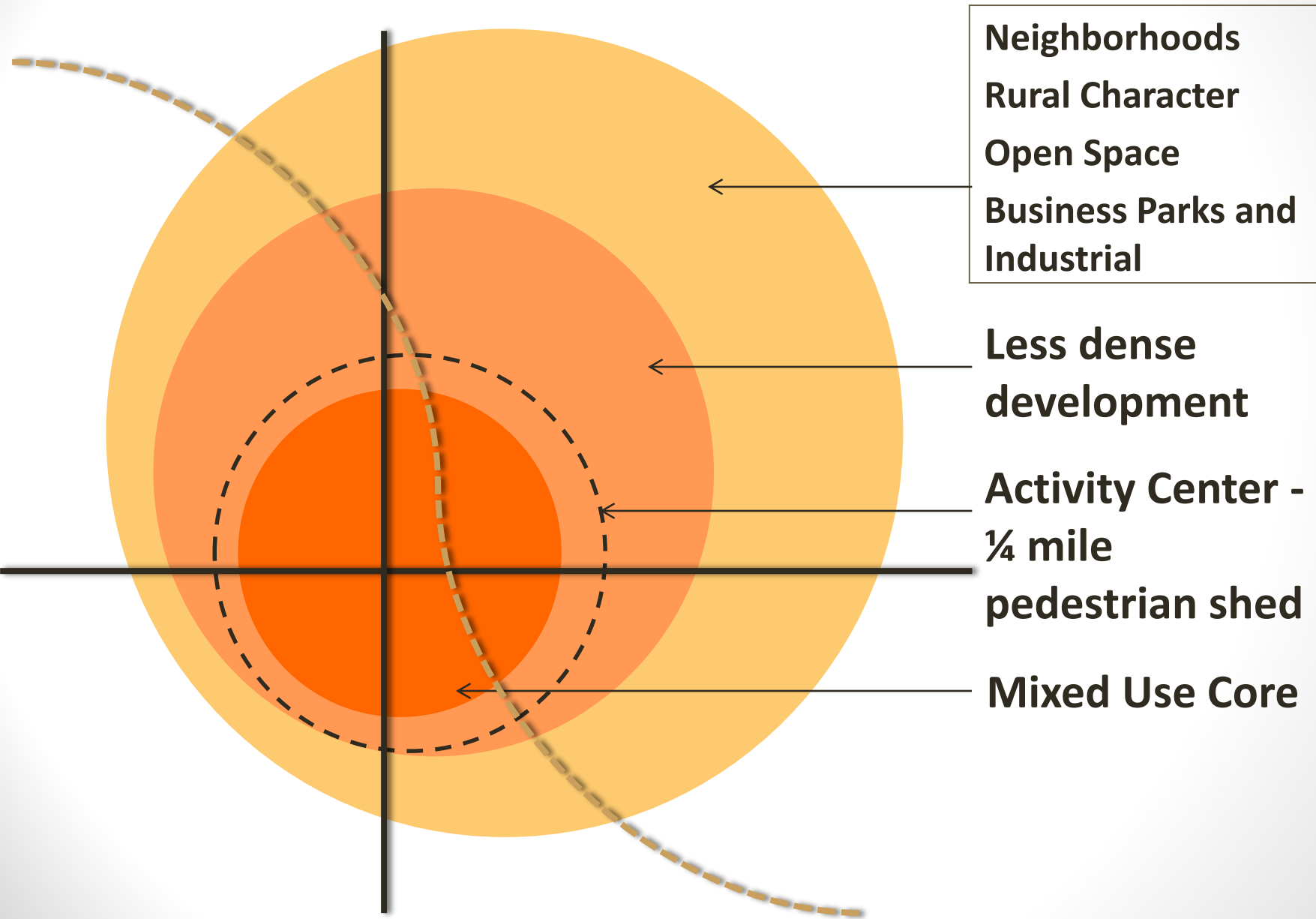
78 % of bicycle trips  
39 % of private vehicle trips

**Trips of less than 1 mile**

- 80 % of all walking trips
- 11 % of private vehicle trips

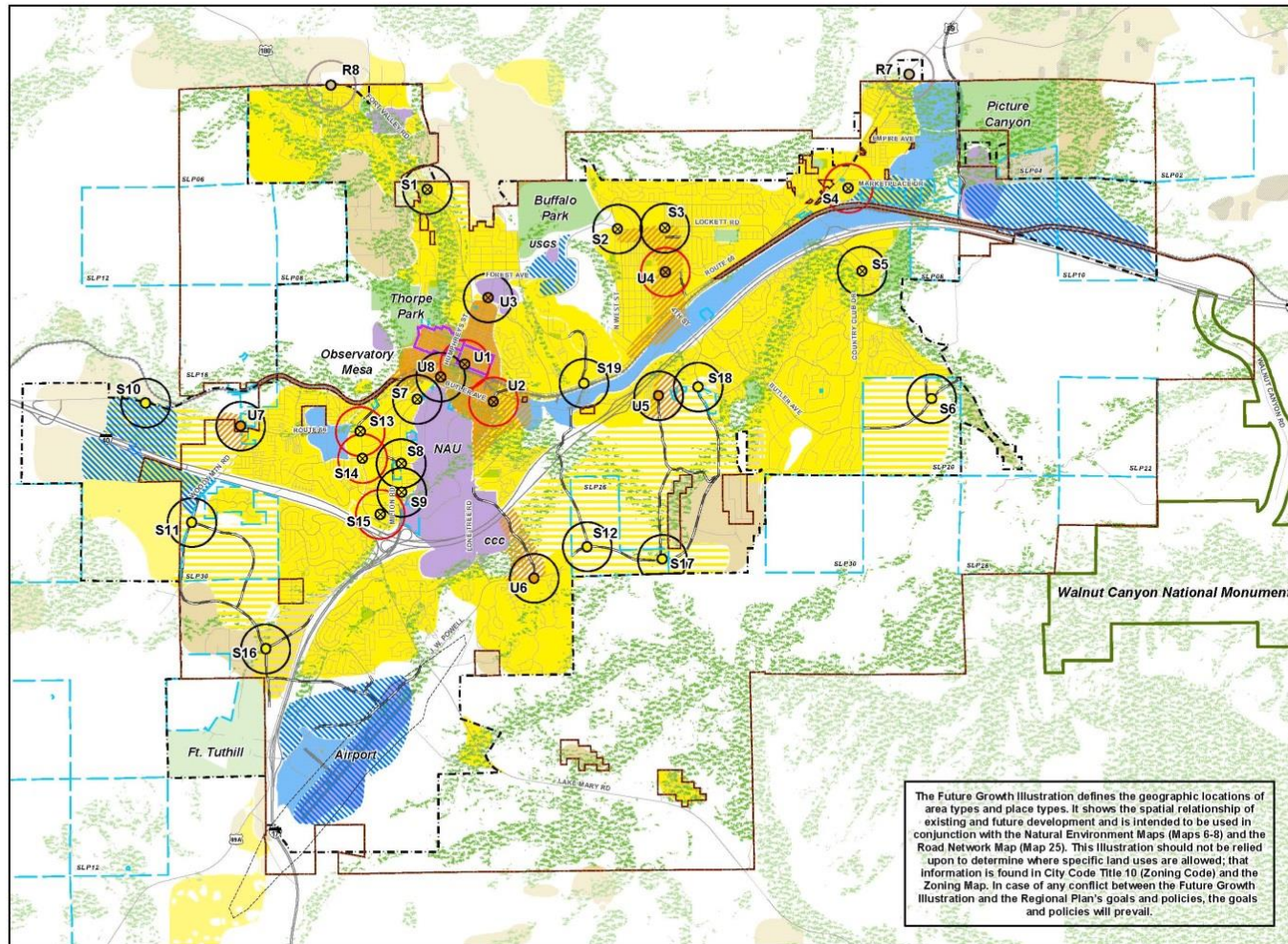


# Place-making: Activity Centers





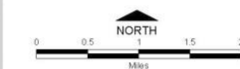
# Future Growth Illustration



Map 22:  
FUTURE GROWTH ILLUSTRATION

- Urban Growth Boundary
- City of Flagstaff
- Future Activity Center
  - Suburban Activity Center (S1)
    - 'x' symbol identifies existing center
  - Urban Activity Center (U1)
    - 'x' symbol identifies existing center
  - Rural Activity Center
- Rural - Existing
- Rural - Future
- Suburban - Existing
- Suburban - Future
- Urban - Existing
- Urban - Future
- Special Planning Area
- Existing Employment/Industrial
- Future Employment
- Historic District
- Park/Open Space
- Concentration of Natural Resources (see Figure 8)
- RTP Future Road Network
- Areas in white retain their existing entitlements
- Fly Zone

Future growth illustrations and plans do not preclude private development entitlements. Please see [www.flagstaffmatters.com](http://www.flagstaffmatters.com) for an interactive GIS map.



FLAGSTAFF REGIONAL PLAN  
VISION 2030: PLACE MATTERS

The Future Growth Illustration defines the geographic locations of area types and place types. It shows the spatial relationship of existing and future development and is intended to be used in conjunction with the Natural Environment Maps (Maps 6-8) and the Road Network Map (Map 25). This illustration should not be relied upon to determine where specific land uses are allowed; that information is found in City Code Title 10 (Zoning Code) and the Zoning Map. In case of any conflict between the Future Growth Illustration and the Regional Plan's goals and policies, the goals and policies will prevail.

# Complete, Connected Places

- Mixed Use
- Increased densities within activity centers and corridors
- Compact development
- Walkability
- Contextual and distinctive identities
  - History and Environment
- High-quality design





# 2014 Bicycle and Pedestrian Survey

## What makes walking difficult or uncomfortable?

No/poor sidewalks	31%
Difficult/too few crossings	18%
Traffic	16%

## What do you like about walking in Flagstaff?

Aesthetics*	21%
Health benefits	12%
Weather	9%

\*Scenery, views, open space, etc

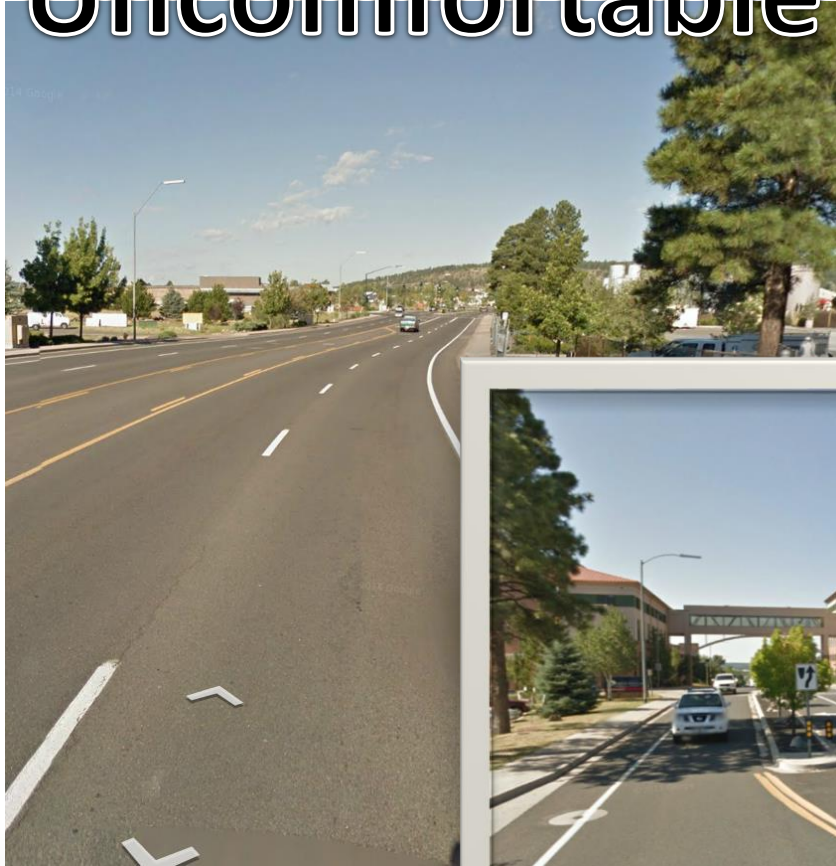
Source: Flagstaff Walking and Biking Survey



Safety → Comfortable

Uncomfortable

Comfortable



# PEDESTRIAN COMFORT – STREETS

- Pedestrian buffers

Sidewalks

- Traffic speed

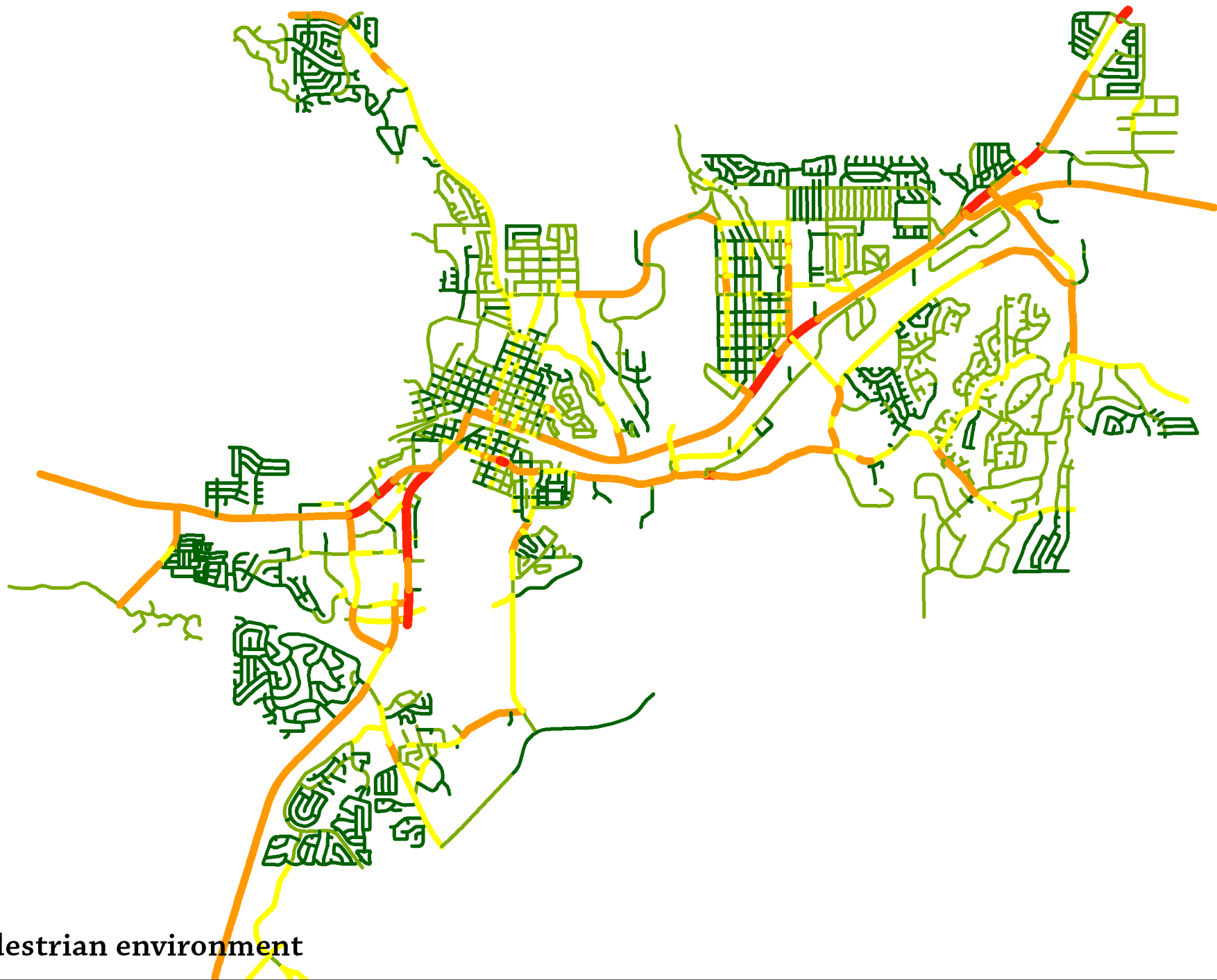
Traffic volume

- Lanes

Median

Pedestrian Realm				
	Pedestrian Intolerant	Pedestrian Tolerant	Pedestrian Supportive	Pedestrian Place
Sidewalk presence	None on locals, none or one side on arterials	One side on locals, both sides on arterials	Both sides of all streets	Both sides of all streets, supplemental traffic calming
Sidewalk width	Less than 5 feet	5 feet min	6 to 8 feet	8 to 10 feet (through), 10 to 30 feet (total)
Sidewalk location and parkway	No parkway, sidewalk at back of curb	Less than 5 foot parkway	5 foot parkway	Planting strip/furnishing zone, walk-talk zone, shy-zone
Street trees	None	None	20 to 30 feet on center	Overstory trees in planting strip; or tree wells and planters
Transit stops	No furniture	Benches provided	Shelters, benches, trash receptacles, bike racks	Transit stops and amenities integral part of design
Pedestrian furnishings	None	None, except transit routes	Intermittent furniture groupings	Furniture groupings, sculpture, drinking fountains, decorative fountains
Pedestrian wayfinding	None	Limited	Provided	Provided throughout
Lighting	None	High-angle	High-angle and low-angle	High angle, low-angle, and light spill from storefronts

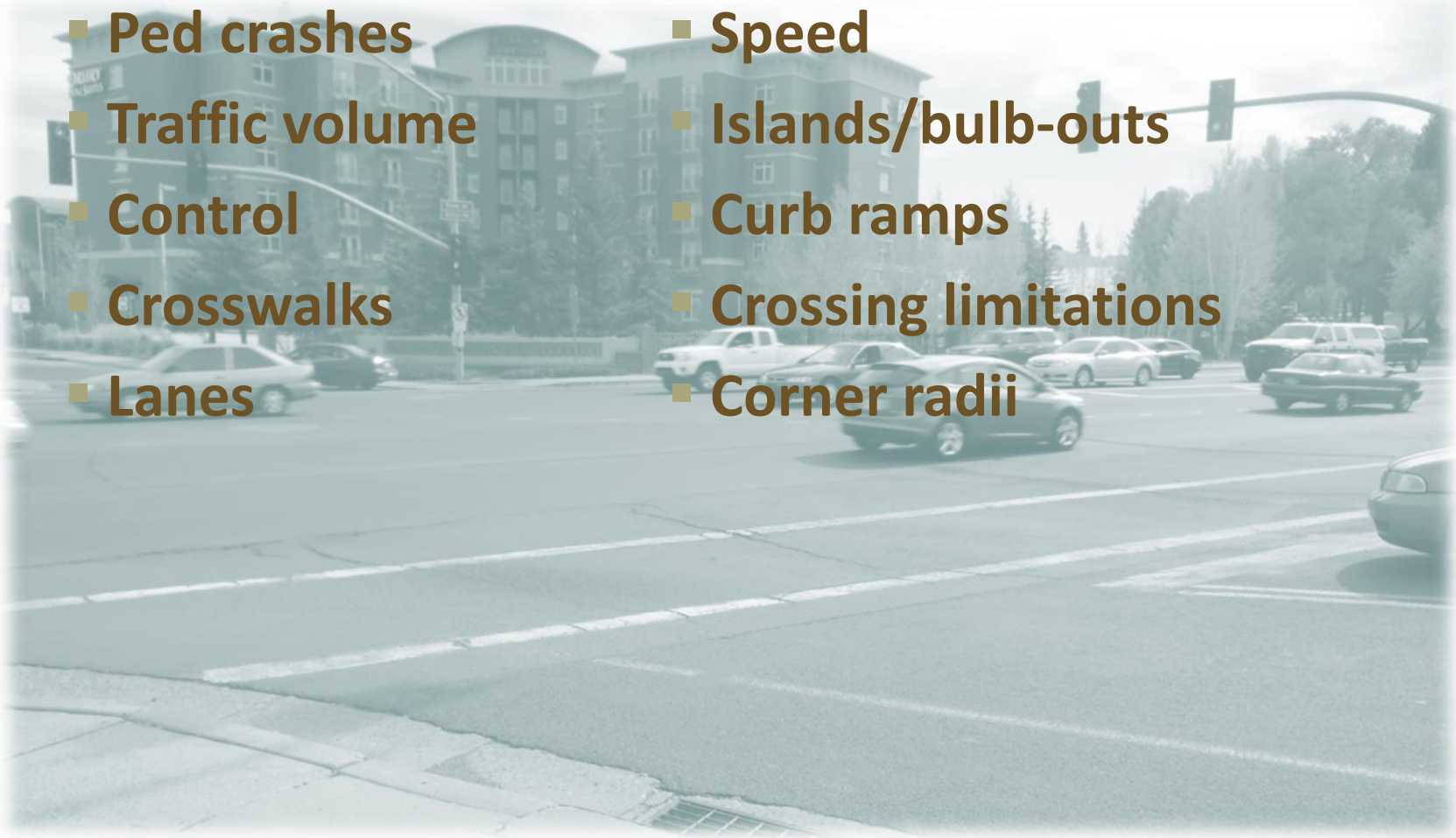


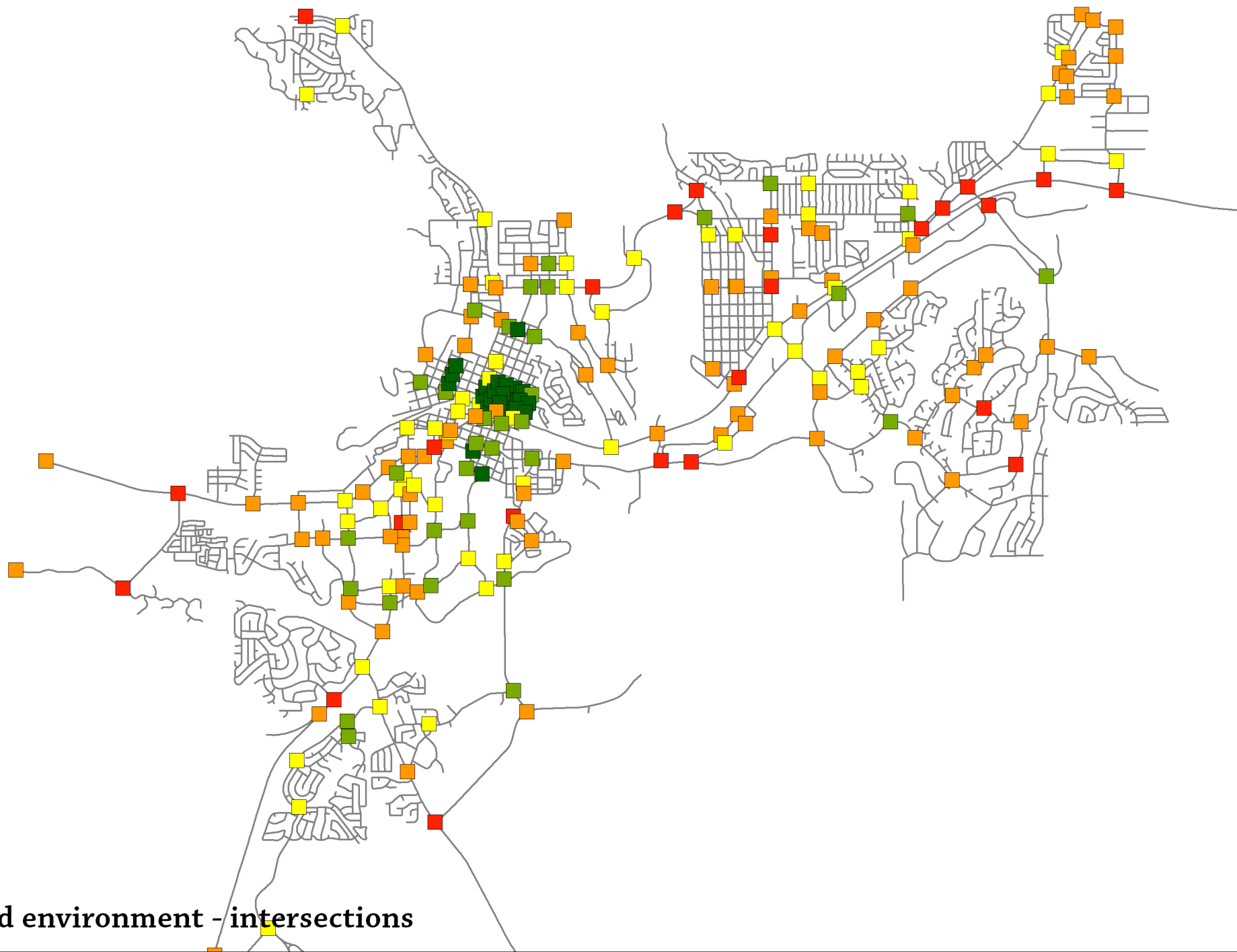


Pedestrian environment

# PEDESTRIAN COMFORT - INTERSECTIONS

- Ped crashes
- Traffic volume
- Control
- Crosswalks
- Lanes
- Speed
- Islands/bulb-outs
- Curb ramps
- Crossing limitations
- Corner radii



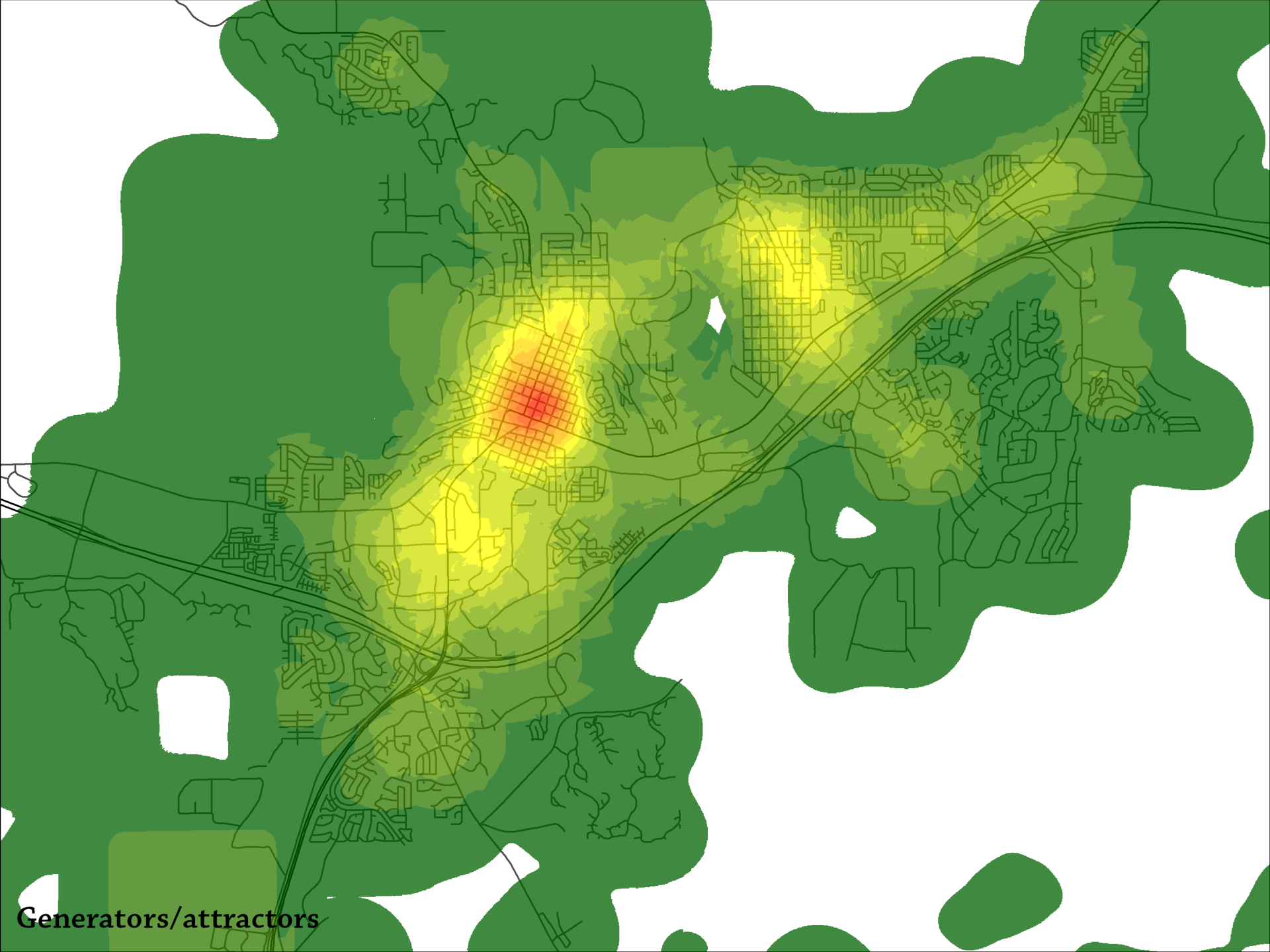


**Ped environment - intersections**

# Activity Centers



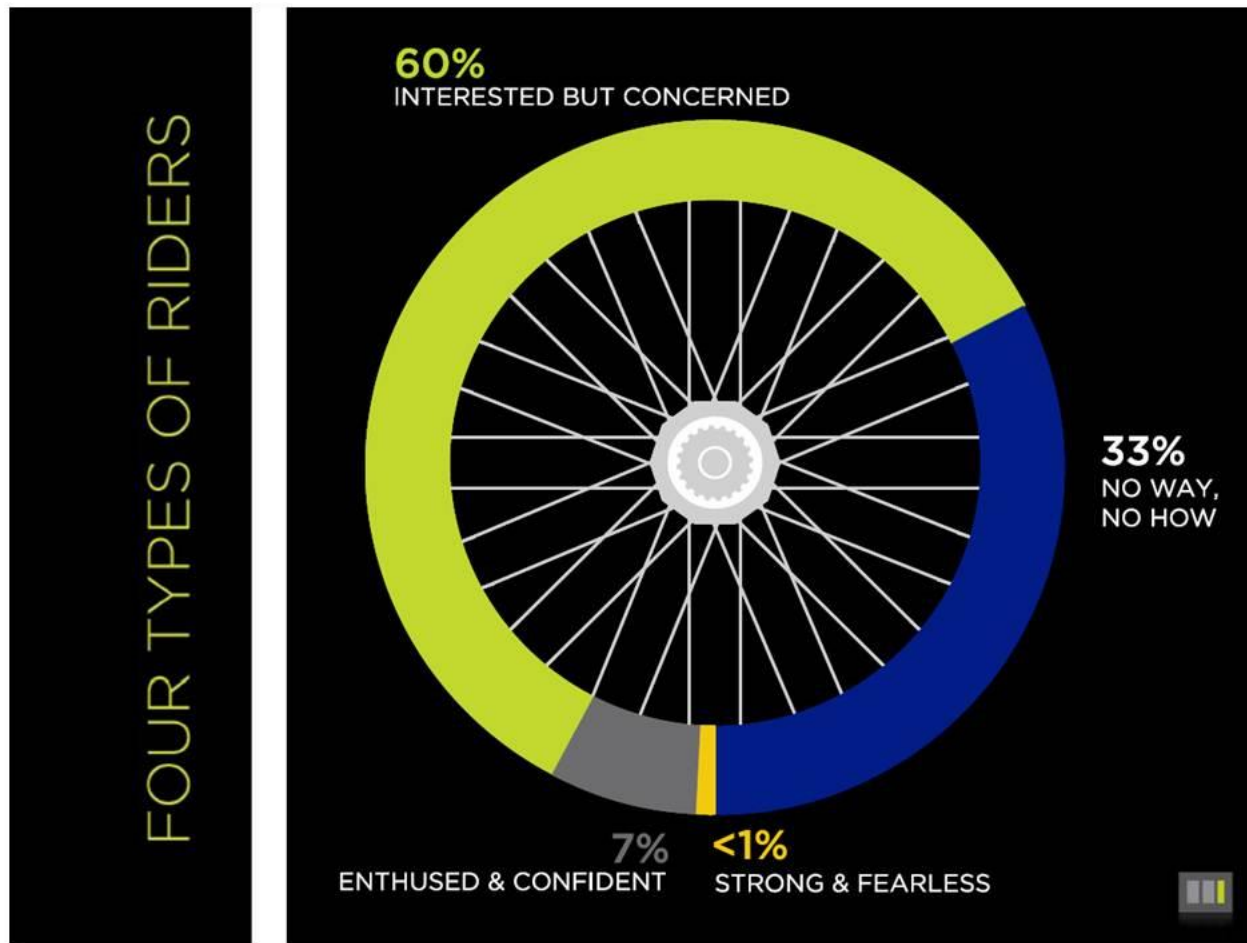




Generators/attractors



# TYPES OF CYCLISTS



# 2014 Bicycle and Pedestrian Survey

## What makes biking difficult or uncomfortable

No/poor bike lanes	29%
Traffic	18%
Maintenance	9%

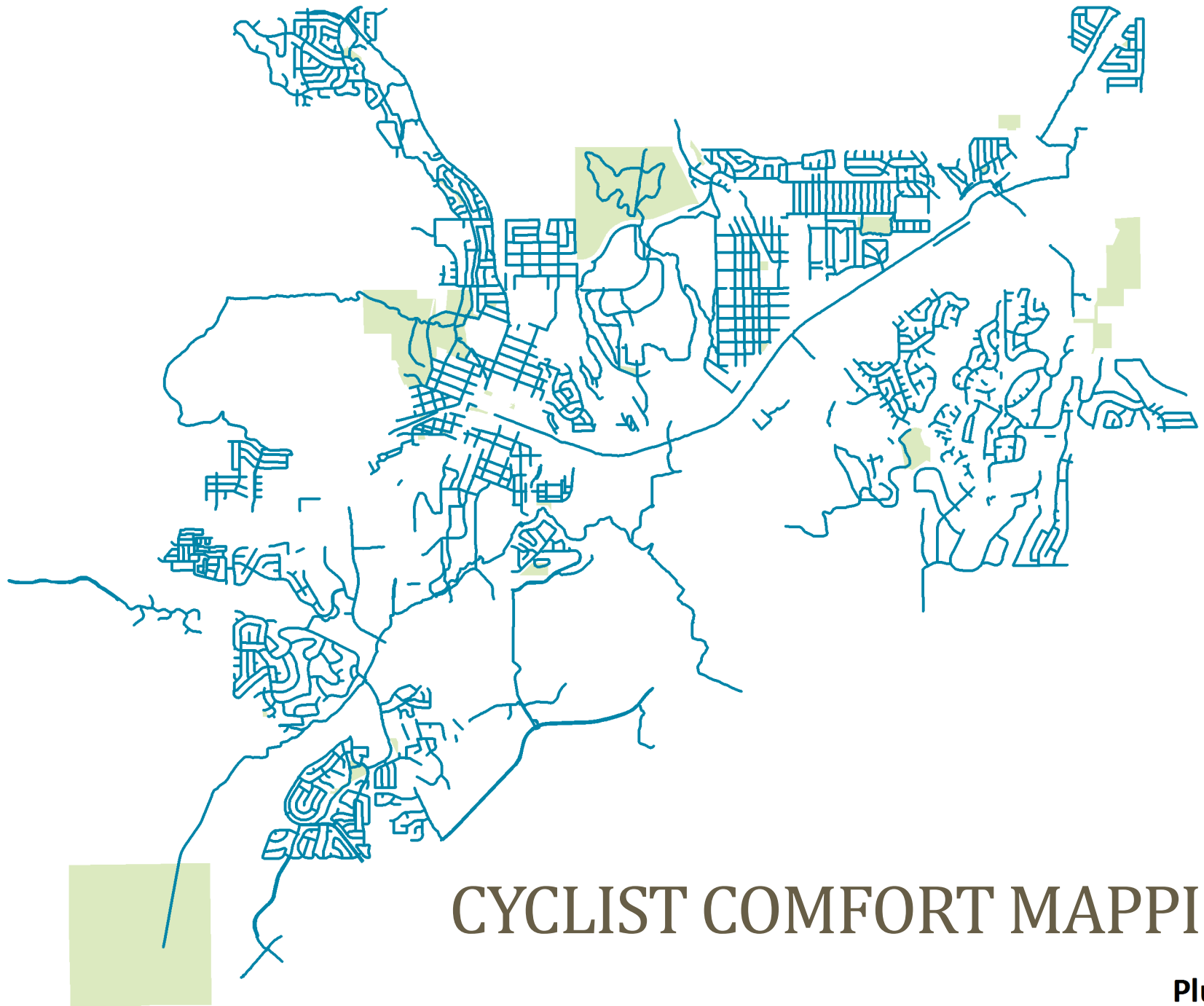
## What do you like about bicycling in Flagstaff

FUTS	13%
Health benefits	10%
Scenery	8%

# CYCLIST COMFORT FACTORS

- Traffic speed
- Traffic volume
- Number of lanes
- Presence/width of bike lane
- Side friction – parked vehicles, right turns, driveways/side streets
- Truck/heavy vehicle volume
- Other bike facilities

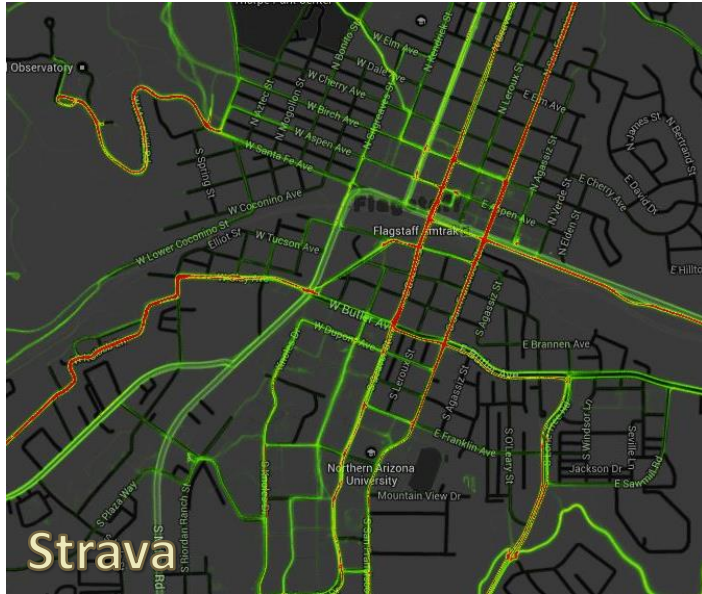




# CYCLIST COMFORT MAPPING

Plus FUTS

# Have Good Assessments



## Surveys

## Walkability audits

# GIS

# Transportation data

## Facilities data

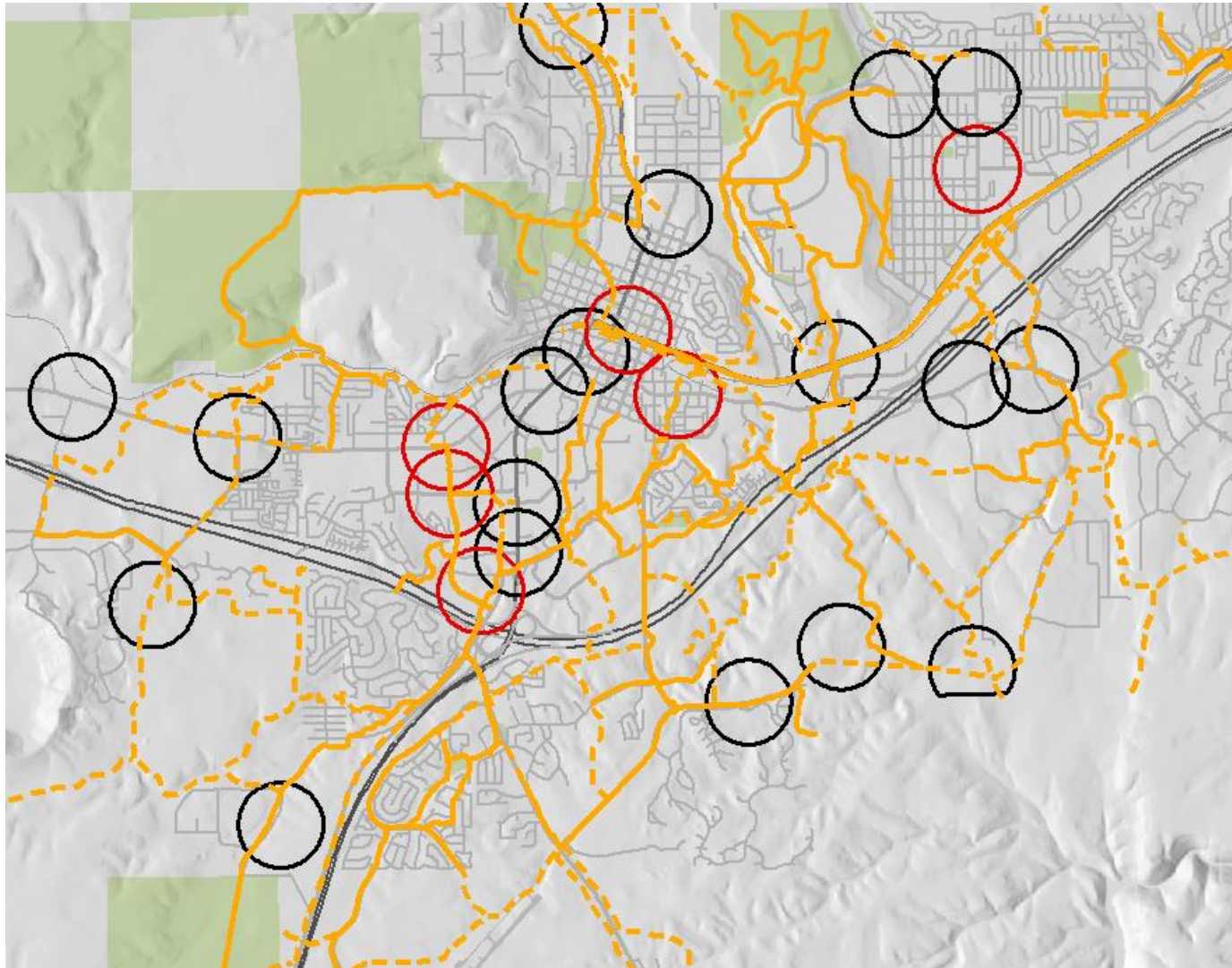
## Online Tools (Strava)

## Find the goat paths

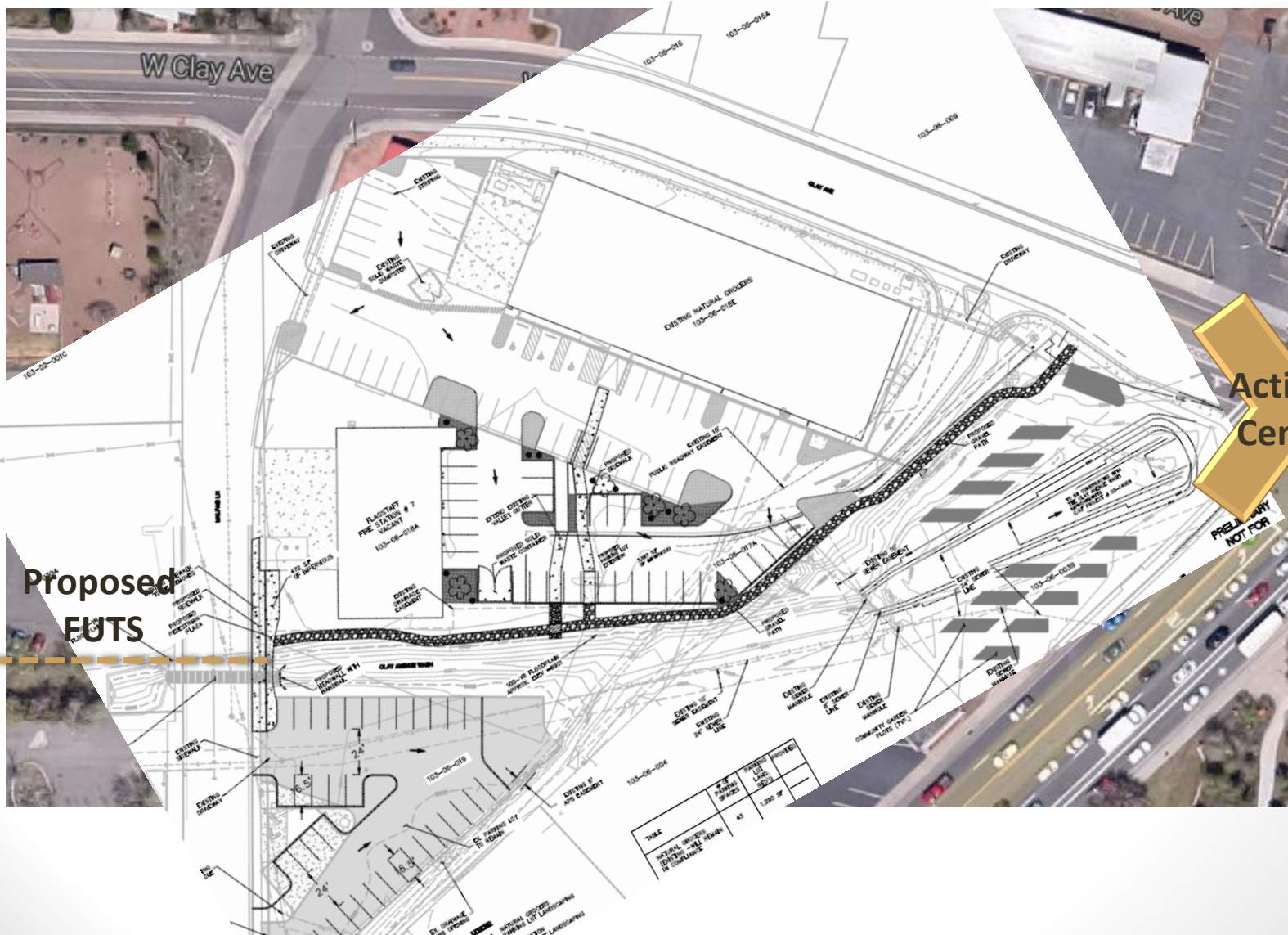
## Talk a walk with your staff and decision-makers



# Make No Small Plans



# Clear, Specific Policies Matter



# References

## **Flagstaff websites**

[www.FlagstaffMatters.com](http://www.FlagstaffMatters.com)

[Flagstaff.az.gov/futs](http://Flagstaff.az.gov/futs)

[Flagstaff.az.gov/bicycle](http://Flagstaff.az.gov/bicycle)

[Flagstaff.az.gov/pedestrian](http://Flagstaff.az.gov/pedestrian)

FBO

## **Other Resources**

[CDC Physical Activity and Built Environment Resource Center](#)

[Bikewalk.org](http://Bikewalk.org)

[Smart Growth America Complete Streets](#)

[Strava Global Heat Map](#)